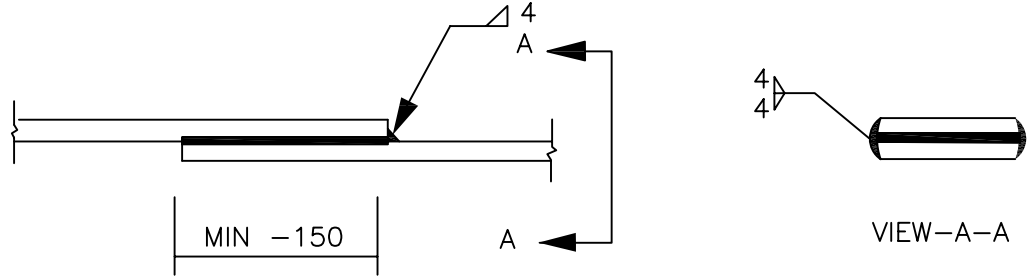
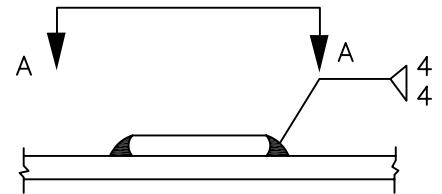
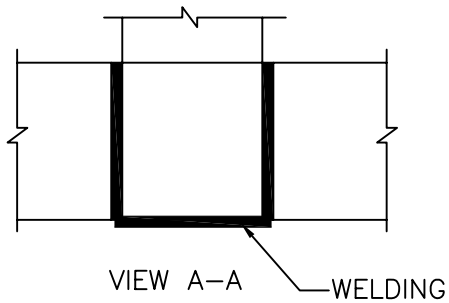


STRIP TO STRIP

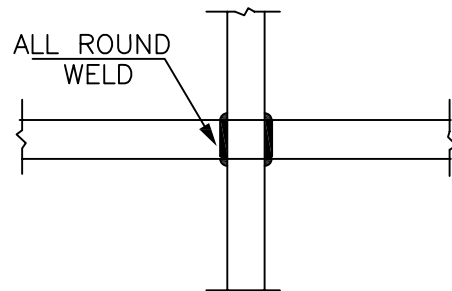
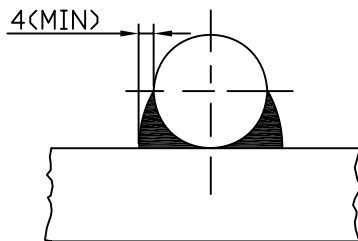
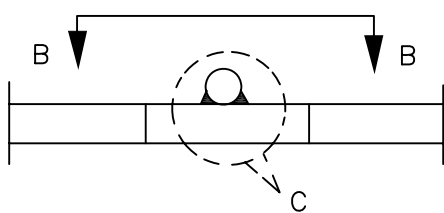
1. STRAIGHT LAP JOINT/RISER



2. CROSS LAP JOINT



RIGHT ANGLED JOINT (ROD TO ROD)



VIEW B-B



EQUIPMENT EARTHING DETAILS WELDING DETAIL

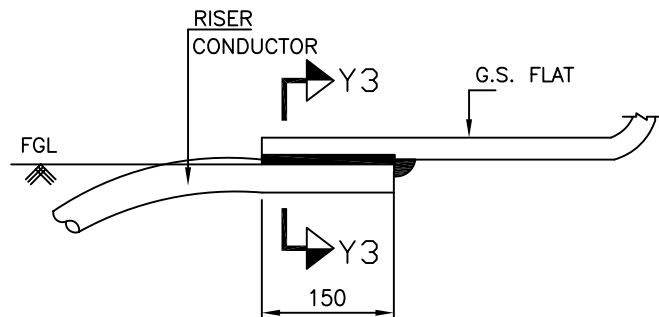
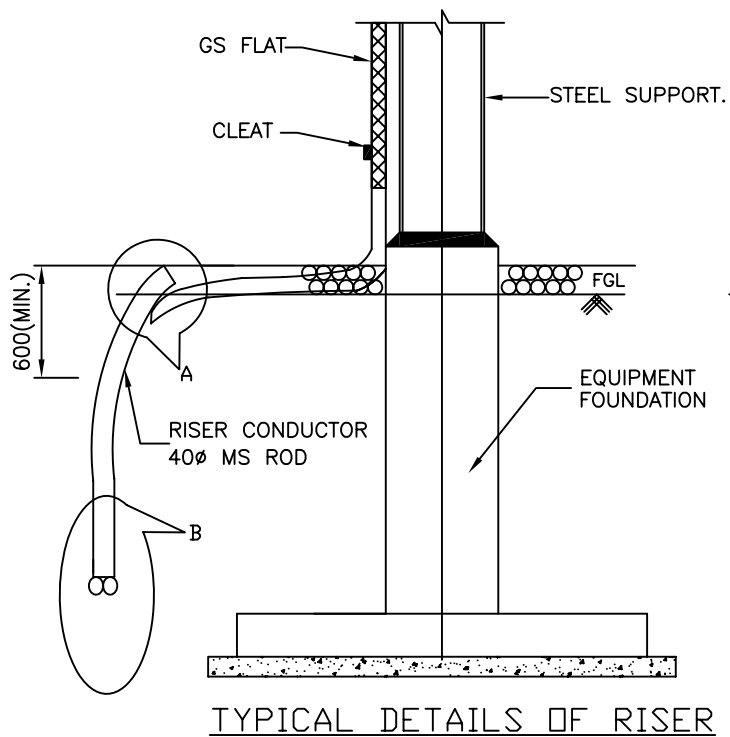
COMPUTERREF.NO.

DRG. No.

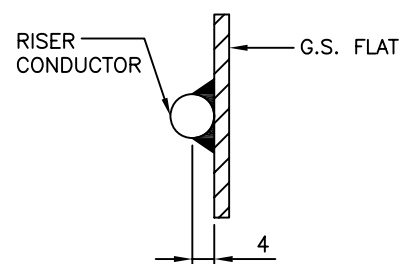
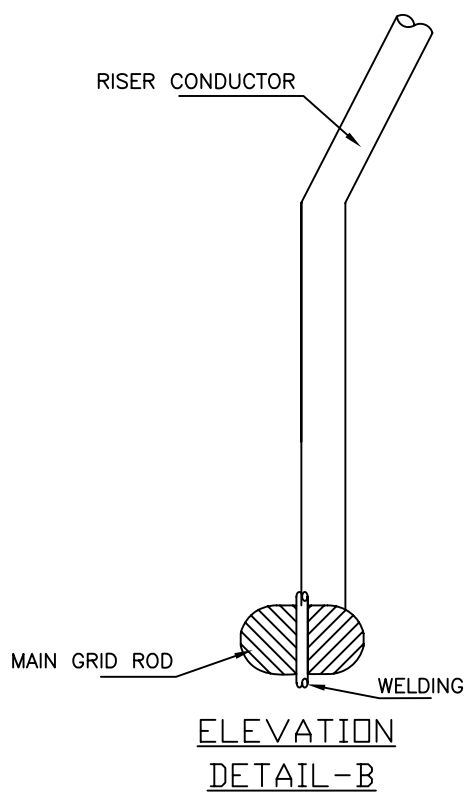
TB-4-301-316-007

REV. 00

SHEET No.
14



ELEVATION
DETAIL-A



SECTION Y3-Y3



EQUIPMENT EARTHING DETAILS WELDING DETAILS

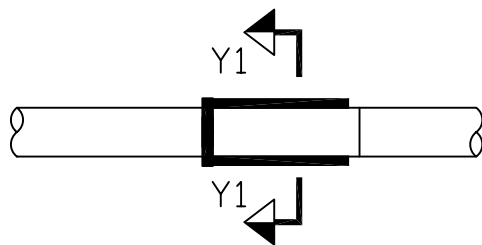
COMPUTERREF.NO.

DRG. No.

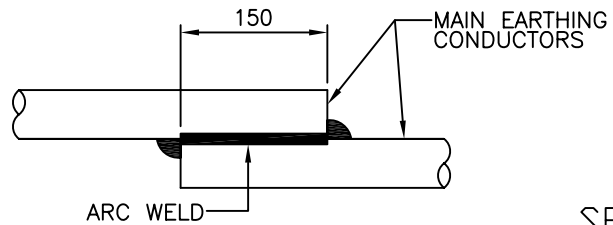
TB-4-301-316-007

REV. 00

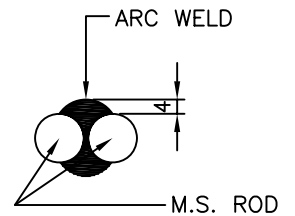
SHEET No.
15



ELEVATION

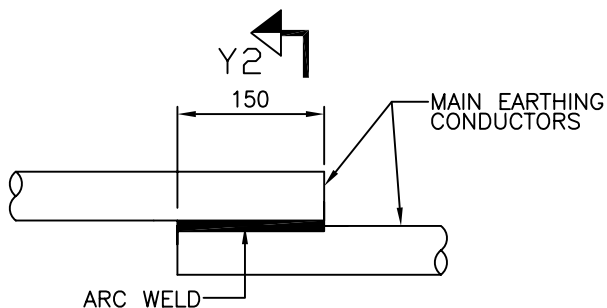


PLAN

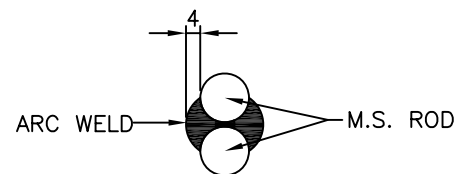


SECTION Y1-Y1

<CONDUCTOR IN HORIZONTAL PLANE>



PLAN



SECTION Y2-Y2

<CONDUCTOR IN VERTICAL PLANE>



EQUIPMENT EARTHING DETAILS WELDING DETAILS

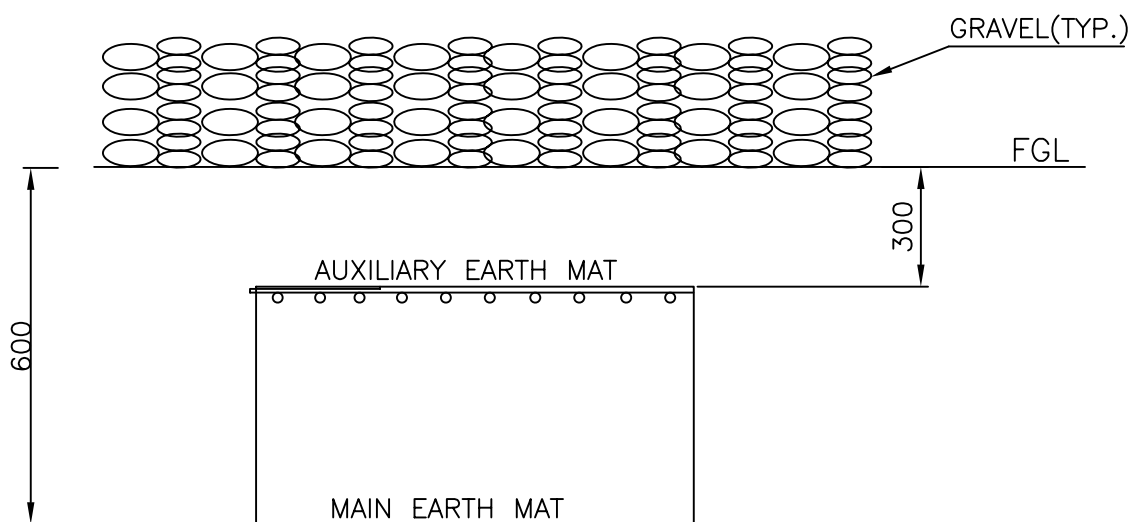
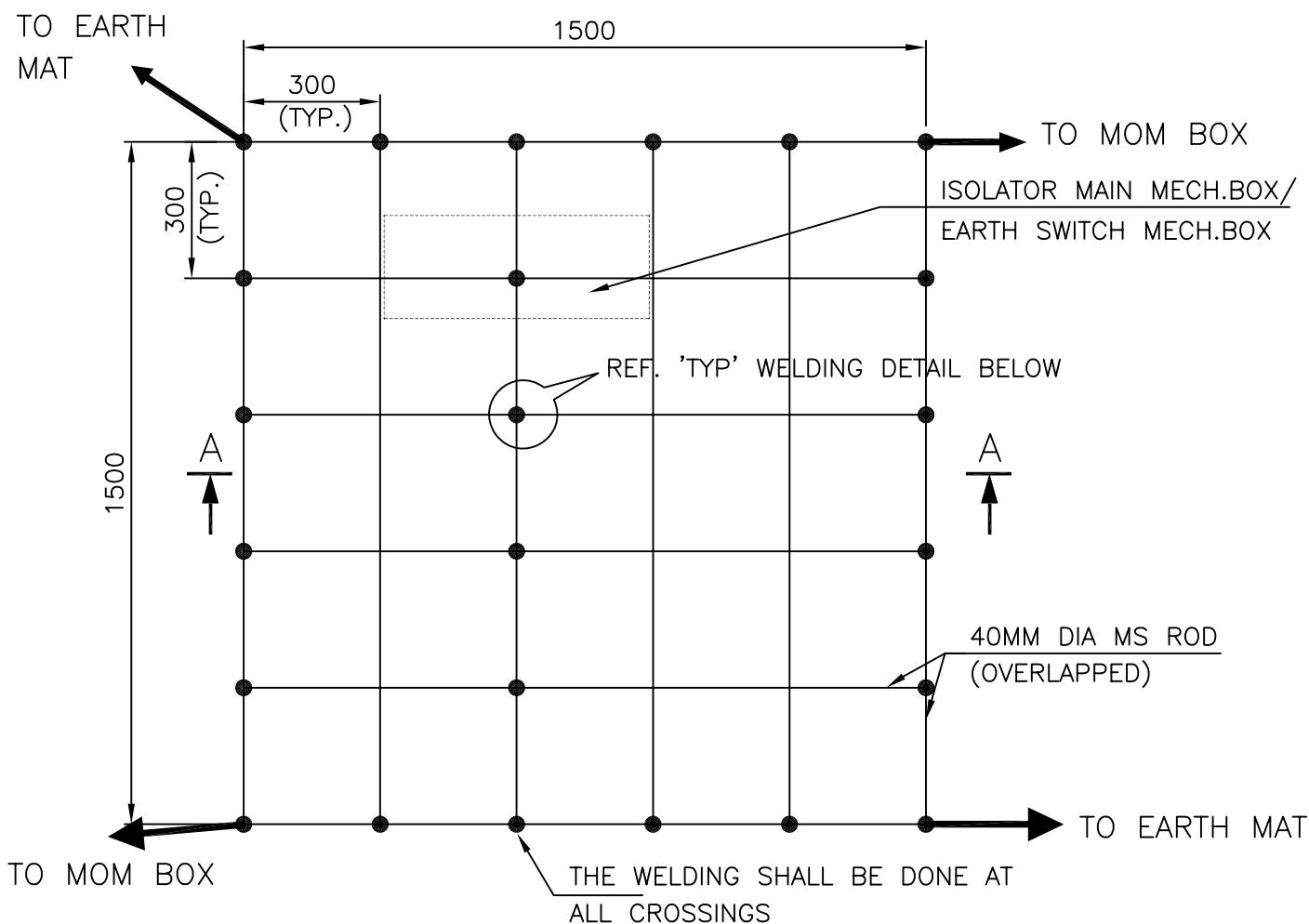
COMPUTERREF.NO.

DRG. No.

TB-4-301-316-007

REV. 00

SHEET No.
16



SECTION AA

NOTE:

AUX. EARTH MAT SHALL BE SO POSITIONED THAT THE FOOT OF THE OPERATOR ALWAYS LIE OVER THE AUX. EARTH MAT AREA WHILE ATTENDING / OPERATING THE MECH. BOX THE CABLE TRENCH ROUTING SHALL BE PLANNED ACCORDINGLY.



COMPU. DRG. REF.

Report No.

EQUIPMENT EARTHING DETAILS

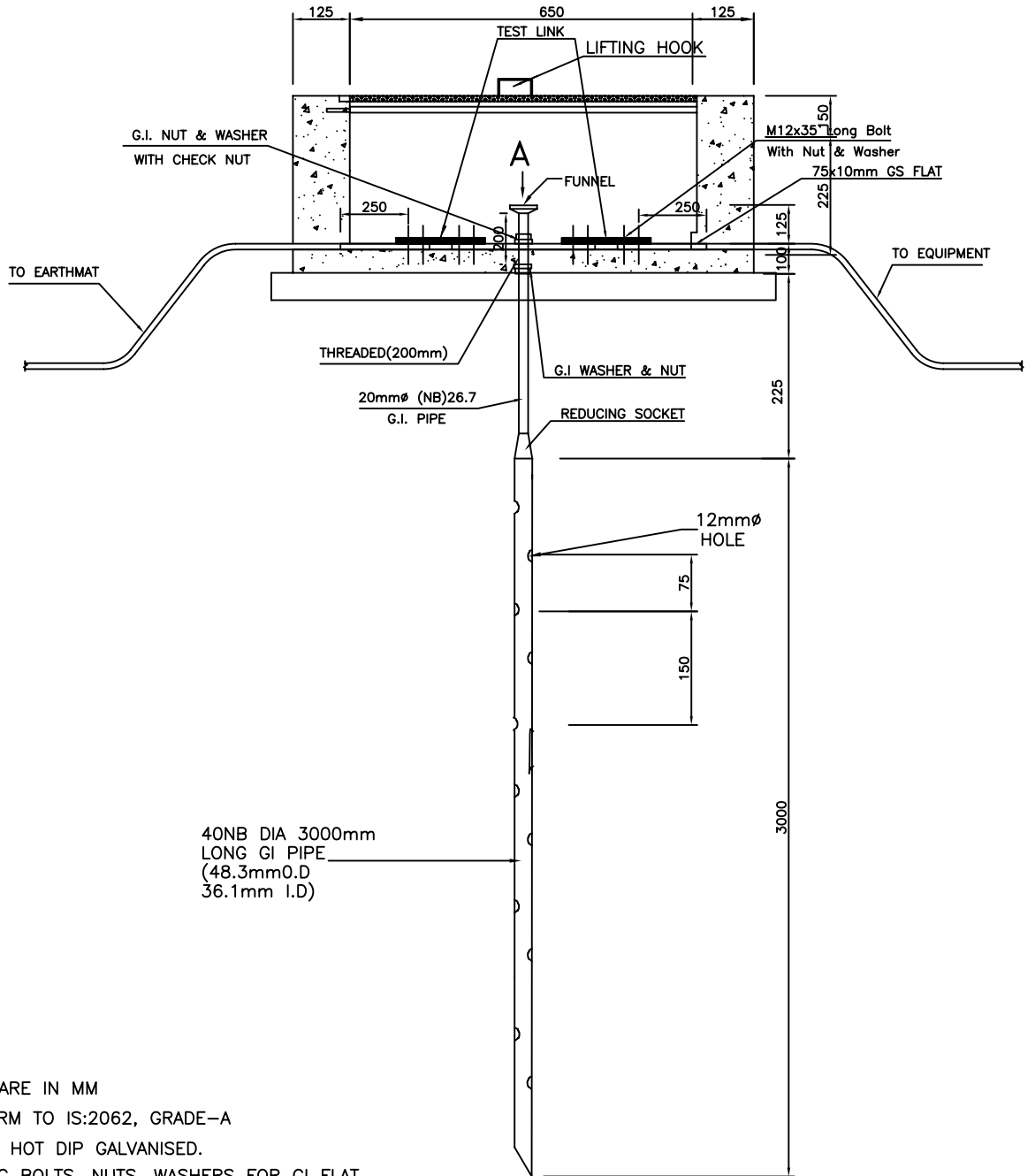
AUXILIARY EARTH MAT FOR ISOLATOR MAIN MECH., E/S
MECH. BOX

TB-4-301-316-007

REV. 00

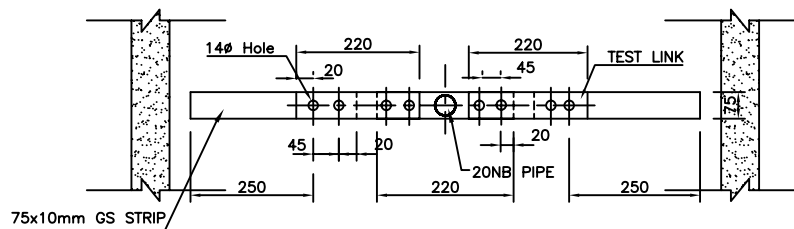
SHEET No.

11



NOTE:

1. ALL DIMENSIONS ARE IN MM
2. STEEL TO CONFORM TO IS:2062, GRADE-A
3. ALL ITEMS TO BE HOT DIP GALVANISED.
4. SUPPLY OF FIXING BOLTS, NUTS, WASHERS FOR GI FLAT EARTHING CONDUCTOR IS ALSO PART OF THE SCOPE
5. ALL NUT & BOLTS SHALL BE M10 OR ABOVE.



VIEW-A



EQUIPMENT EARTHING DETAILS

PIPE EARTH ELECTRODE

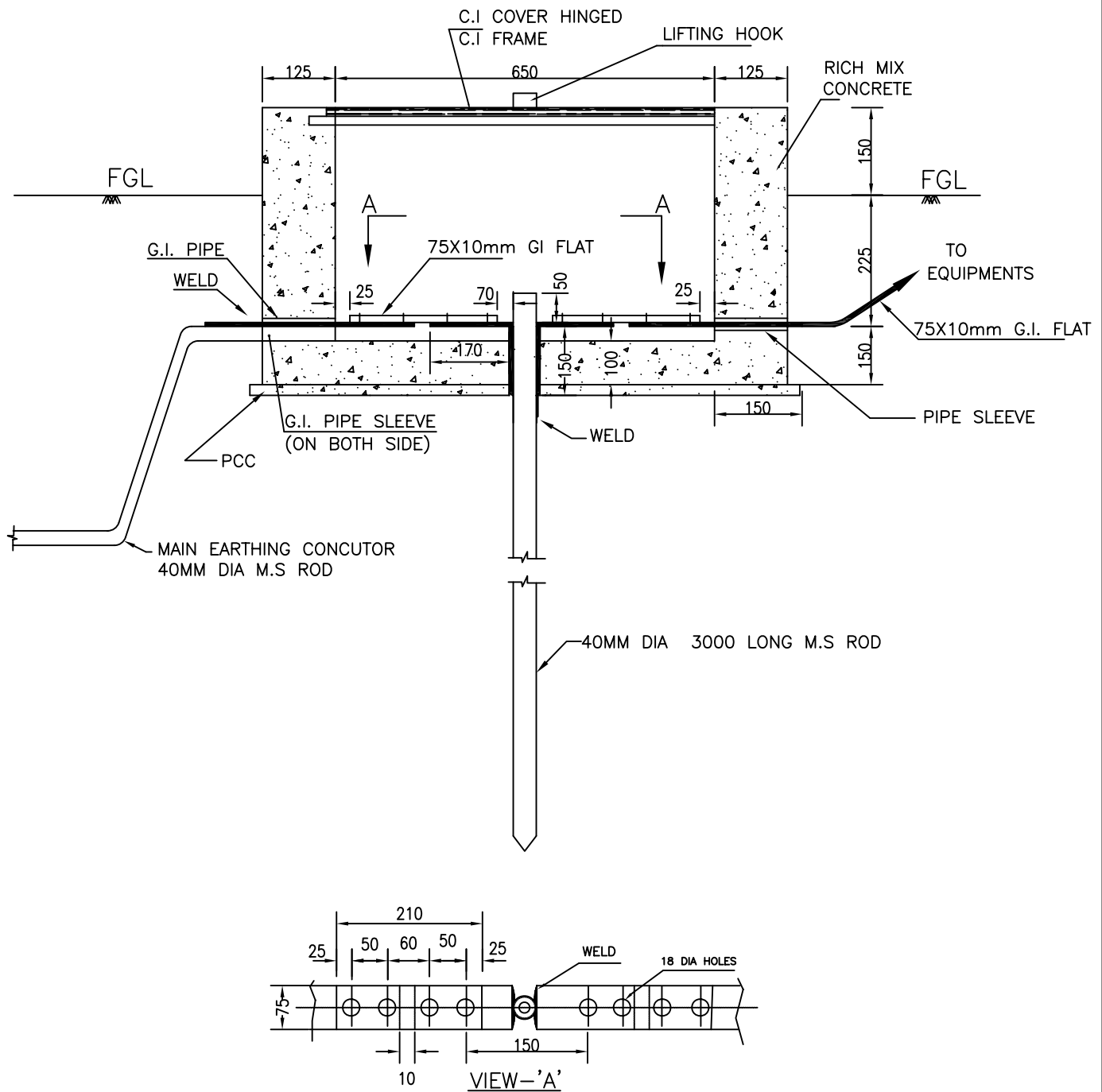
COMPUTER REF. NO.

DRG. No.

TB-4-301-316-007

REV. 00

SHEET No.
21



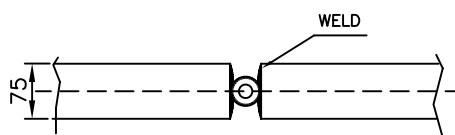
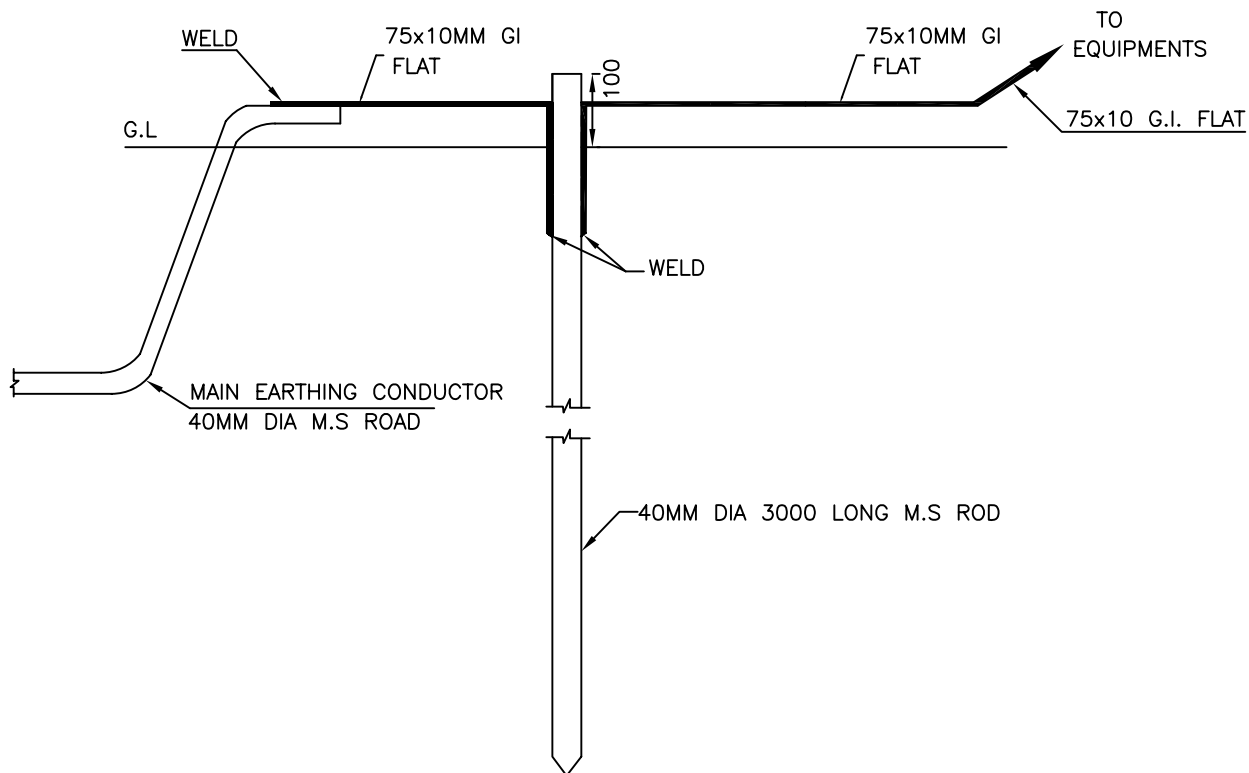
NOTES:-

1. SUPPLY OF FIXING BOLTS NUTS & WASHERS FOR GI FLAT EARTHING CONDUCTOR IS ALSO FORMS PART OF THE SCOPE.
2. TO BE USED FOR CONNECTING DOWN CONDUCTOR OF LIGHTNING PROTECTION SYSTEM.
3. PIPE SLEEVE ENDS SHALL BE SEALED AFTER COMPLETION OF WORK.
4. ALL NUTS, BOLTS & WASHERS SHALL BE GALVANISED.



EQUIPMENT EARTHING DETAILS

ROD EARTH ELECTRODE WITH TEST PIT



VIEW - 'A'

NOTES:-

1. SUPPLY OF FIXING BOLTS NUTS & WASHERS FOR GI FLAT EARTHING CONDUCTOR IS ALSO FORMS PART OF THE SCOPE.
2. TO BE USED FOR CONNECTING DOWN CONDUCTOR OF LIGHTNING PROTECTION SYSTEM.
3. ALL NUTS, BOLTS & WASHERS SHALL BE GALVANISED.



EQUIPMENT EARTHING DETAILS ROD EARTH ELECTRODE WITHOUT TEST PIT